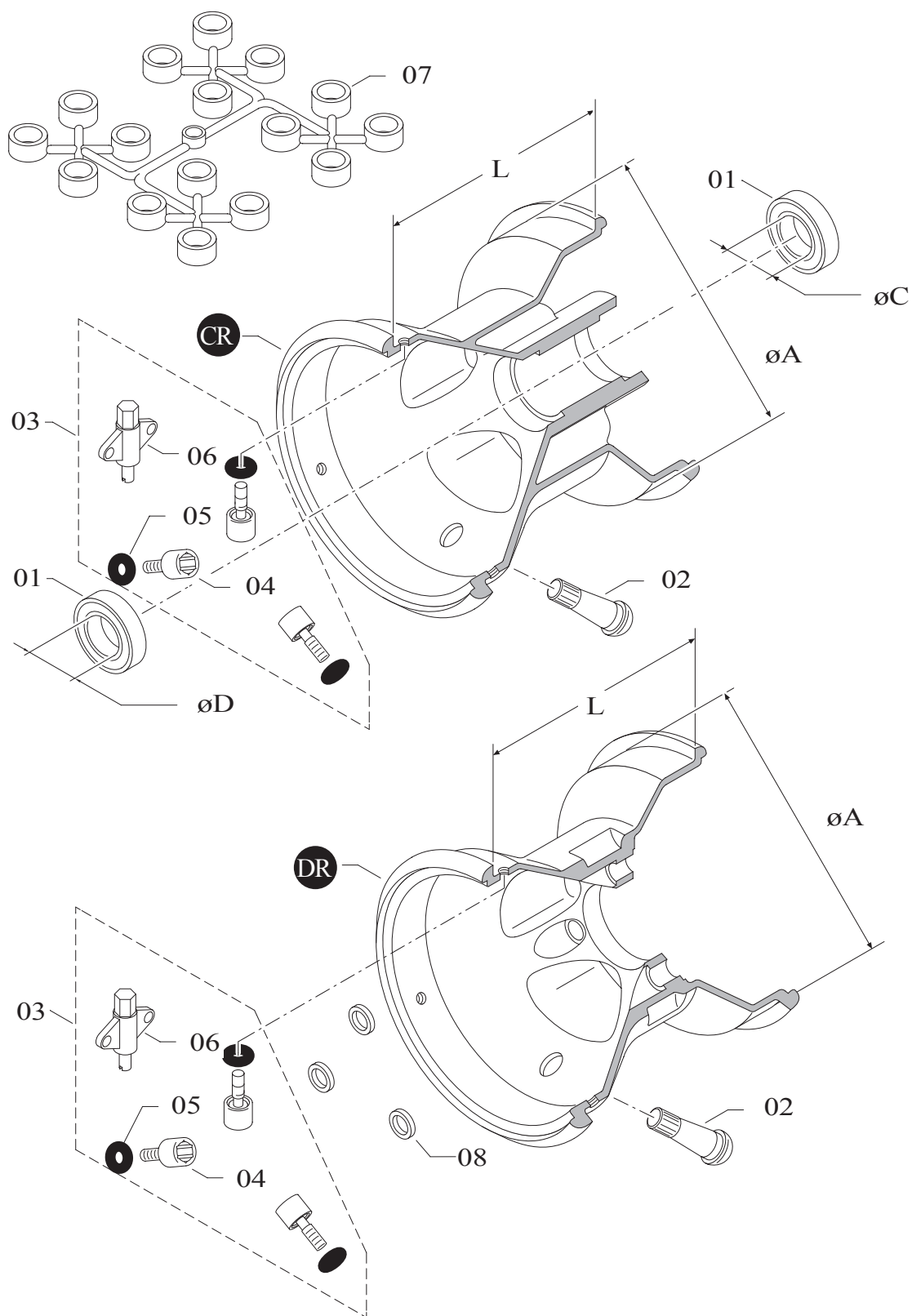


RUOTE "R" - WHEELS "R"

GR.M.03/091



[øA "(CR) L] = [5 CR 110]

[øA "(DR) L] = [5 DR 120]

[øA "(CR) L/C+D] = [5 CR 110/17+17]

RUOTE "R" - WHEELS "R"

GR.M.03/091

Pos.	Cod. Articolo	Descrizione	Description
CR	5500.10.01-OR	RUOTA 5" CR 115A	WHEEL 5" CR 115A
CR	5400.12.57-OR	RUOTA 5" CR 120M HQ	WHEEL 5" CR 120M HQ
CR	5400.12.58-OR	RUOTA 5" CR 130M HQ	WHEEL 5" CR 130M HQ
DR	5400.12.59-OR	RUOTA 5" DR 120M HQ	WHEEL 5" DR 120M HQ
DR	5400.12.60-OR	RUOTA 5" DR 130M HQ	WHEEL 5" DR 130M HQ
DR	5500.10.02-OR	RUOTA 5" DR 150A	WHEEL 5" DR 150A
DR	5400.12.63-OR	RUOTA 5" DR 180M HQ	WHEEL 5" DR 180M HQ
DR	5400.12.64-OR	RUOTA 5" DR 210M HQ	WHEEL 5" DR 210M HQ
CR	6700.00.02-OR	SET RUOTE 5" CR115/17+17-DR150A	WHEEL SET 5" CR115/17+17-DR150A
CR	5450.00.82-OR	SET RUOTE 5" CR120/17+17-DR180M	WHEEL SET 5" CR120/17+17-DR180M
CR	5450.00.06-OR	SET RUOTE 5" CR130/17+17-DR180M	WHEEL SET 5" CR130/17+17-DR180M
CR	5450.00.86-OR	SET RUOTE 5" CR130/17+17-DR210M	WHEEL SET 5" CR130/17+17-DR210M
DR	5450.00.83-OR	SET RUOTE 5" DR120-DR180M HQ	WHEEL SET 5" DR120-DR180M HQ
DR	5450.00.07-OR	SET RUOTE 5" DR130-DR180M HQ	WHEEL SET 5" DR130-DR180M HQ
DR	5450.00.87-OR	SET RUOTE 5" DR130-DR210M HQ	WHEEL SET 5" DR130-DR210M HQ
01	6003-ZZ	CUSCINETTO	BEARING
02	40.2166.00	VALVOLA TUBELESS CORTA	TUBELESS VALVE, SHORT
03	10.5805.00	KIT ANTISTALLONAMENTO M HQ	BEAD LOCK KIT M HQ
04	20.3534.06	VITE ANTISTALLONAMENTO	BEAD LOCK SCREW
05	40.3594.00	OR VITE ANTISTALLONAMENTO	OR BEAD RETAINER
06	20.3924.18	CHIAVE SMONTAVALVOLE	VALVE REMOVE KEY
07	10.2000.00	GRUPPO DISTANZIALI RUOTE	WHEEL SPACER GROUP
08	20.3729.06	ROSETTA 8x15x3	WASHER 8x15x3

Note: Nella descrizione dell'articolo, la lettera finale identifica il materiale.

Legenda materiali: A = Alluminio, F = Ferro, G = Ghisa, M = Magnesio.

Nel colore, le lettere finali identificano il colore.

Legenda colori: BA = Bianco, BL = Blu, GL = Giallo, LU = Lucido, NE = Nero, OR = Oro, RO = Rosso, VE = Verde, MC = Multicolor.

I sets di ruote, nelle varie combinazioni, si intendono completi di: cuscinetti o anelli di fissaggio, valvole, tubeless ed viti antistallanamento.

Note: In the article description, the final letter identifies the material.

Material index: A = Aluminium, F = Iron, G = Cast iron, M = Magnesium.

The final letters in the code identify the colour.

Colour index: BA = White, BL = Blue, GL = Yellow, LU = Bright, NE = Black, OR = Gold, RO = Red, VE = Green, MC = Multicolor.

The wheel sets, in the different version, are completed with bearings or stop ring, tubeless valves and bead locks.